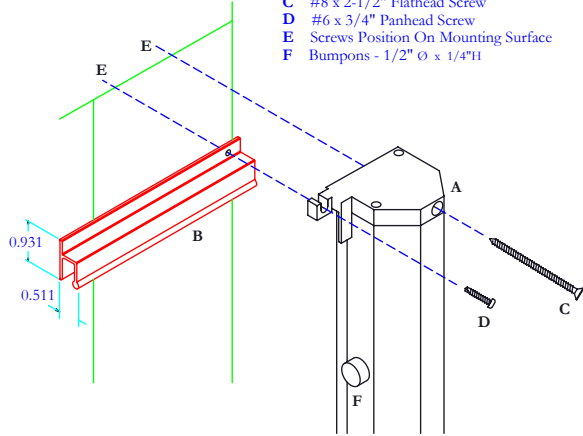


Phantom Door Design Specifications

(External Assembled View)

Parts Spec

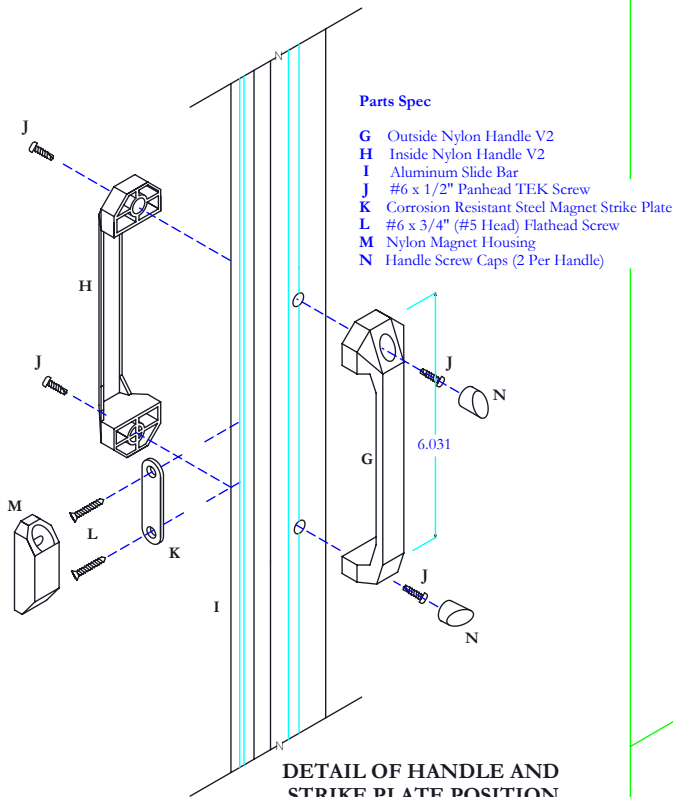
- A Aluminum Housing c/w Nylon End Cap
- B Aluminum Track
- C #8 x 2-1/2" Flathead Screw
- D #6 x 3/4" Panhead Screw
- E Screws Position On Mounting Surface
- F Bumpons - 1/2" Ø x 1/4"H



**DETAIL OF TRACK POSITION
IN RELATION
TO THE HOUSING AND HOUSING END CAP
(HEAD VIEW)**

Parts Spec

- G Outside Nylon Handle V2
- H Inside Nylon Handle V2
- I Aluminum Slide Bar
- J #6 x 1/2" Panhead TEK Screw
- K Corrosion Resistant Steel Magnet Strike Plate
- L #6 x 3/4" (#5 Head) Flathead Screw
- M Nylon Magnet Housing
- N Handle Screw Caps (2 Per Handle)



**DETAIL OF HANDLE AND
STRIKE PLATE POSITION
IN RELATION
TO THE SLIDE BAR**

